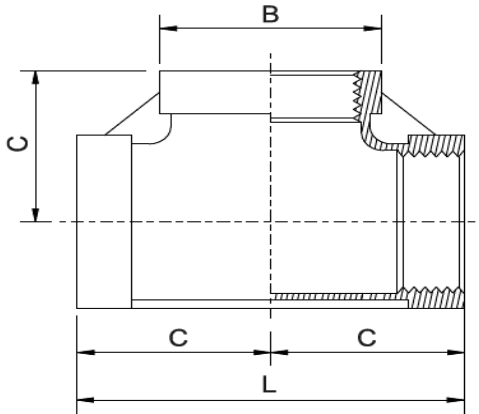




STAINLESS STEEL LIGHT TYPE SCREWED FITTINGS BSPP (ISO 228-1), BSPT (ISO 7-1), NPT THREAD

DIMENSION: LIGHT TYPE
MATERIAL CONFORM TO ASTM A351 GR. CF8 & CF8M
PRESSURE-TEMPERATURE RATINGS 300 PSI (-29 TO 66°C)
MADE BY LOST WAX INVESTMENT CASTING



EQUAL TEE

Economic
Pattern

SIZE	B	C	L	Weight
	(mm)	(mm)	(mm)	(Kg/Pc)
1/2"	26.5	22.15	44.3	0.07
3/4"	32.3	26.00	52.0	0.10
1"	40.0	31.25	62.5	0.17
1 1/4"	49.0	37.50	75.0	0.24
1 1/2"	55.5	41.00	82.0	0.30
2"	68.0	47.80	95.6	0.44